



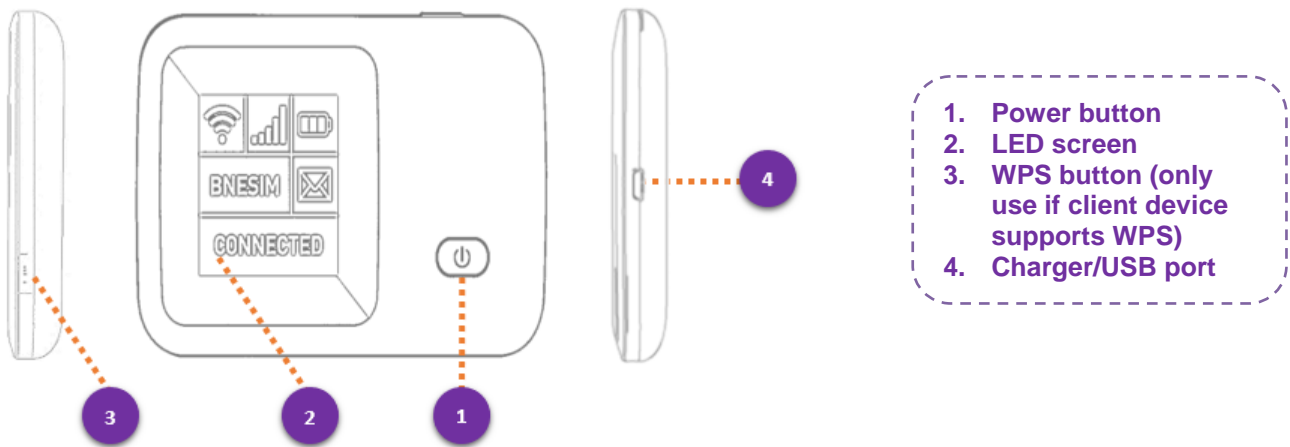
BNE MFWS-501 Personal Hotspot (MiFi) User Instructions

The BNE MFWS-501 is a personal WiFi hotspot that uses the mobile data network to provide an internet connection for any WiFi enabled client (e.g. laptop, ipad, ipd etc.)

The MiFi or Personal hotspot device should come pre-configured and ready to use.

The MiFi can be used in two ways, WiFi or wired. The easiest way to use the device is in WiFi mode. In WiFi mode up to 10 users can share the internet connectivity of the device, where as in wired mode only one person can use the device because it is plugged in to a computer.

General Information



- 1. Power button
- 2. LED screen
- 3. WPS button (only use if client device supports WPS)
- 4. Charger/USB port



Please insert SIM card according image with correct install
Support standard SIM card, please put it with card sets together when use micro sim card.

LED Screen Indicators



Icon	Description
	Network signal strength
	Network type, this will display either 2G or 3G or 4G
	Indicates device is abroad and registered to a roaming network
	New SMS message received
	Battery power indication



BNE MFWS-501 Personal Hotspot (MiFi) User Instructions

Set Up a WiFi Connection

To use the device in WiFi mode, you must have a computer that is WiFi enabled. Check with your computer manufacturer or user manual if you are unsure. If your laptop has a separate WiFi switch, turn this to the on position.

1. By default the WiFi signal is secured by an encryption key. This is either printed on the barcode label inside the battery compartment or on a separate sticker on the front of the device, along with the WiFi SSID (network name). Make a note of this as it is required later in the process.
2. Press the power button on the MiFi.
3. Wait for the LED screen to power on and register to a mobile network. The mobile network name will be displayed in the middle of the screen.
4. The device should attempt to auto connect to the internet. Once connected it will show connected in the bottom right corner of the screen.
5. You should now use your normal WiFi manager on your computer to locate the MiFi network name (SSID) and connect to it.

Note: The steps to connect to a WiFi network vary depending on your operating system and whether you use the native application or third-party software.

6. Enter the WiFi key when requested. (case sensitive)
7. When successfully connected a number will appear next to the WiFi symbol (top right corner of the screen) to indicate one client is connected. This number will increment by 1 with the number of connected clients.

Please note that if you are roaming the MiFi may not always connect automatically to the mobile network. To connect, you need to browse to the admin console web interface of the device, by typing in IP <http://192.168.0.1> in a web browser.

Setup a Wired Connection

This section contains information on installing the software, configuring your new profile, and connecting to the internet.

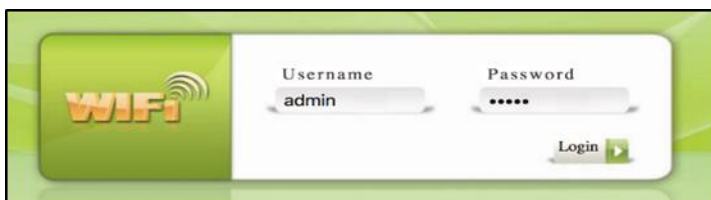
1. Plug & Play. Wait for drivers to install and the installation wizard to automatically appear.
2. When the installation wizard starts, follow the on-screen prompts to complete the installation.

Creating a Connection Profile

If the MiFi will not connect to the internet and the status never changes to Connected, then you may need to setup a connection profile to connect to the internet, using specific settings provided by network of the SIM card being used.

1. With the Mifi connected either using Wifi or Wired methods, log into the admin console by browsing to <http://192.168.0.1>
2. Default Username and Login Password is [admin](#)

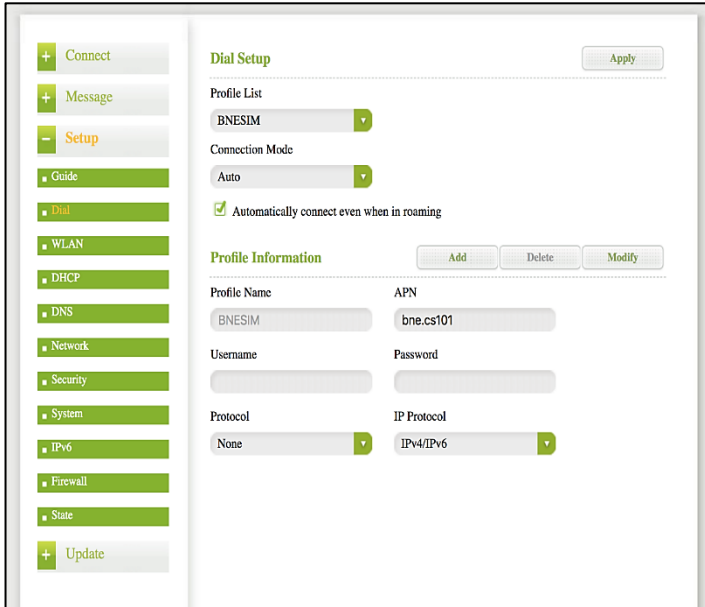
PICTURE 1.



BNE MFWS-501 Personal Hotspot (MiFi) User Instructions

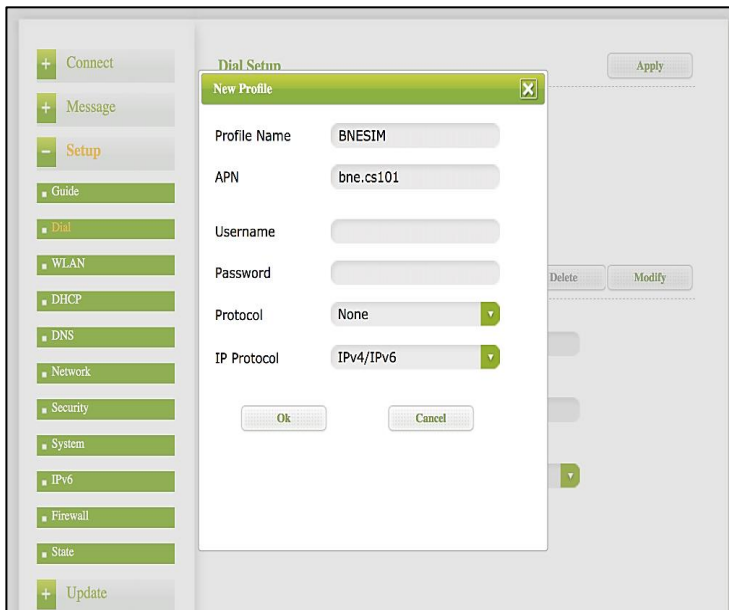


PICTURE 2.

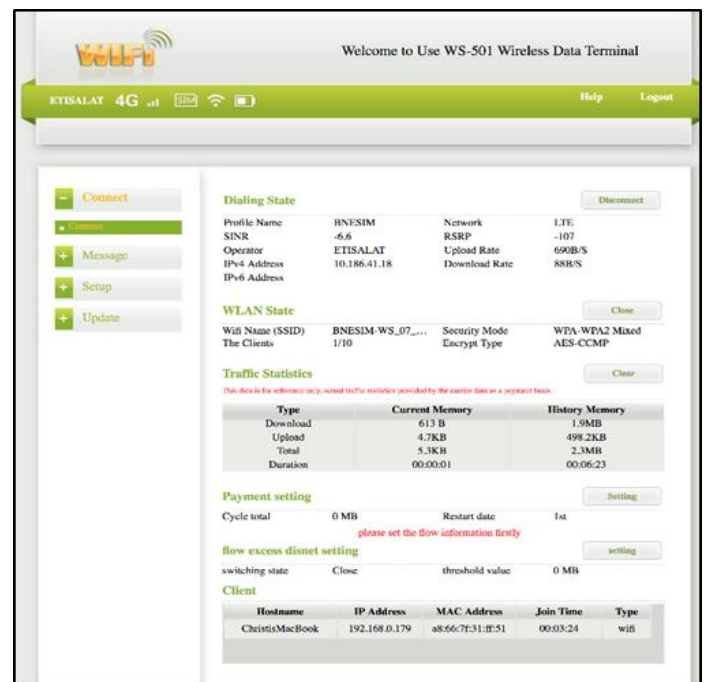


3. Navigate to Setup > Dial Setup
4. Click the Add button (next to Profile information to manually add APN)
5. Start entering the following details:
 - a. Profile Selection: AddNew
 - b. Profile Name: **BNESIM**
 - c. APN: **bne.cs101**
 - d. Click Set Default button to save and set as the default profile. If you click Save first, click Set Default afterwards.
6. Power off the device and power it up again and the device should auto connect to the internet
7. See below Picture 3 for further details.
8. To see the Traffic Usage, click the Connect button at the top left corner (as shown in Picture 4)

PICTURE 3.



PICTURE 4.



Sleep Mode

After 10 minutes of no activity and no clients being connected to the MiFi, the device will enter sleep mode. The LED screen will power off, but the product will still be turned on. To exit sleep mode press the power button.

It is normal for the LED screen to turn off during normal usage to conserve power, like a screen saver. To re-activate the screen, press the power button.