

Network



Sigfox™



LoRaWan®*



Local Modbus*

Performances



Range : up to 15km

Autonomy



7 years with 3 Tx/day



One LS14500Ex battery



Battery level indicator

Divers



Switch configuration



Web platform



Waterproof IP65 box



Zone 2 environment



The ACW-MR2Ex allows you to report two digital inputs towards a web platform and to **remote-read** the metering informations from a **gas** counter done on a regular basis (configurable reports time).

This modem exists with 2 digital inputs intended to work on the new LPWAN networks dedicated to the IoT: Sigfox, LoRaWan or local Modbus radio. Ideal to supervise your equipment's on the web, It is perfectly adapted for an urban environment and to be used in a difficult environment.

Technical features

Dimensions	160 x 53 x 53 mm
Antenna	Integrated (¼ wave)
Temperature	-20°C to +55°C (functioning mode) -40°C to +70°C (storage mode)
Mounting	Wall, tube, DIN-Rail
Box	IP 65
Power supply	1 LS14500Ex battery
Weight	100 g
Frequency	865 – 870 MHz
Power	25 mW (14 dBm)
Speed	LoRaWan : 300 bit/s to 10 Kbit/s Sigfox : 100bps
Consumption	Sigfox :
Tx mode	60 mA
Sleep mode	1,4 µA
Rx mode	35 mA
Certification	CE /II 3G Ex ic IIB T4 Gc

References

2 pulse counters + 1 "cable cut" :

- ACW/SF8-MR2Ex
Sigfox
- ACW/LW8-MR2Ex
LoRaWan

Gaz meter cable :

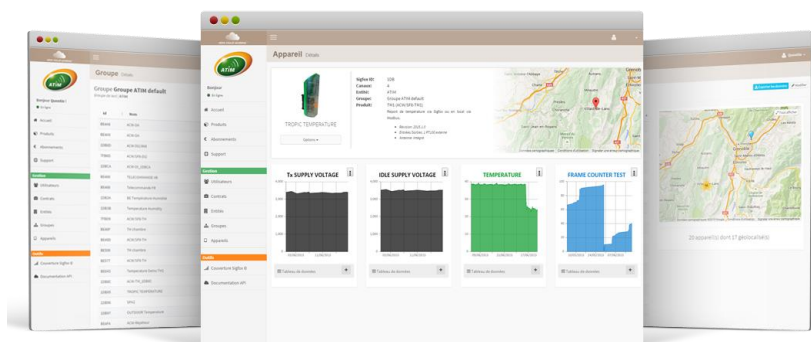
- CAB/MTRGAZ1
M16 connector IP40

ATEX Lithium battery :

- BAT/MTRGAZ1
LS14500EX battery

Available with the ACW platform
or the modem on its own.

Atim Cloud Wireless™ Platform



Control all your atim devices using Sigfox and LoRa on the same secured Web platform !

Manage and Operate your IoT sensors data very easily !

Thanks to the new **LPWAN** network device remote management is simple and accessible to anyone.

- Managing the products by groups
- Signal quality
- SMS Alerts
- Email Alerts
- Secured API
- Find all your data in real time on a graphic/control panel
- Personalization of the graphics and information channels
- Export your data (by product or by group)
- Geo-tracking of your products
- Radio coverage tool

Comm-Co B.V.
Kreekzoom 9, 4561 GX, Hulst
The Netherlands
Tel: +31 114-370030
Email: info@comm-co.com

COMM-CO
Communication today and tomorrow