



# DEX CAM



## Dexcam 14/DCA

Dome camera,  
EExd, Weatherproof

### Introduction

This compact and lightweight colour dome camera has been designed for use in potentially explosive atmospheres and harsh environmental conditions. The camera housing is manufactured completely from Stainless Steel 316 which is ideally suited for use within the offshore and onshore environments. Stainless Steel screws and mounting bracket are incorporated ensuring a totally corrosion free unit.



- Zone 1/21 and Zone 2/22 use
- EExd IIB/IIC T6 \*
- ATEX approved for Gas and Dust
- Cert. No DNV-2004-OSL-ATEX-0115
- IP66/67 protection, IP68 on request
- Stainless Steel 316 construction
- High Quality CCD colour module
- Fan & Heater
- High speed dome camera
- Built-in 26x optical zoom
- Day/night functionality
- Minimum illumination 0,01 lux (B/W)
- Backlight Compensation
- Auto White Balance
- Preset speed up to 400°/sec

\* Model dependent



Alarm



Signal



Control



Communications



## Camera Specifications

### Models

#### Camera

CCD Sensor

Progress ve Scan

Optical Zoom Ratio

Digital Zoom

Effective Pixels

Horizontal Resolution

Scanning System

Synchronisation

Video Output

S/N Ratio

Minimum Illumination

Focal Length

Focus Mode

White Balance

Iris Control

Electronic Shutter

AGC Control

Back light Compensation

#### Operation

Build in Protocol

Multi language OSD

Pan Travel

Tilt Travel

Manual Speed

Presets

Preset Accuracy

Preset Speed

Cruise

Sequence

Auto Pan

Privacy Mask

Proportional Pan & Tilt

Resume after Power loss

ZoneTitle

Home Function

Auto Flip

Digital Slow Shutter

Motion Detection

Day/Night: IR Cut Filter

Alarm Input

Alarm Output

Alarm Reaction

Control Interface

Power Source

Power Consumption

DEX14-DCA-HT

1/4" EXview HAD CCD

Yes

26x (Maximum zoom operation can give optical deformation because of EExd dome lens)

1x ~ 12x variable

440 k (PAL)

480 TVL

PAL, NTSC

Internal / Line Lock

1,0 Vpp / 75 ohm, BNC

>50 dB (AGC Off)

0,07 lux, 0,01 lux (B/W)

3.5 ~ 91 mm

Auto / Manual

Auto / Manual

Auto / Manual

1/1 ~ 1/10k sec.

Auto / Manual

On / Off

Pelco D&P, Philips, Kalatel, VCL, AD-422, JVC, etc.

English, French, German, Italian, Japanese, Polish, Portuguese, Russian, Spanish

360 ° endless

-10° ~ 190°

1° ~ 90°/s

256

0,225° Pan

0,225° Tilt

5° ~ 400°/s Pan

5° ~ 400°/s Pan

1

8

4

24

On/Off (Pan and Tilt speed is proportional to zoom ratio)

Yes

16

Preset, Sequence, Auto pan Cruise

Digital / Mechanical / Off

On / Off

On / Off

On / Off

8

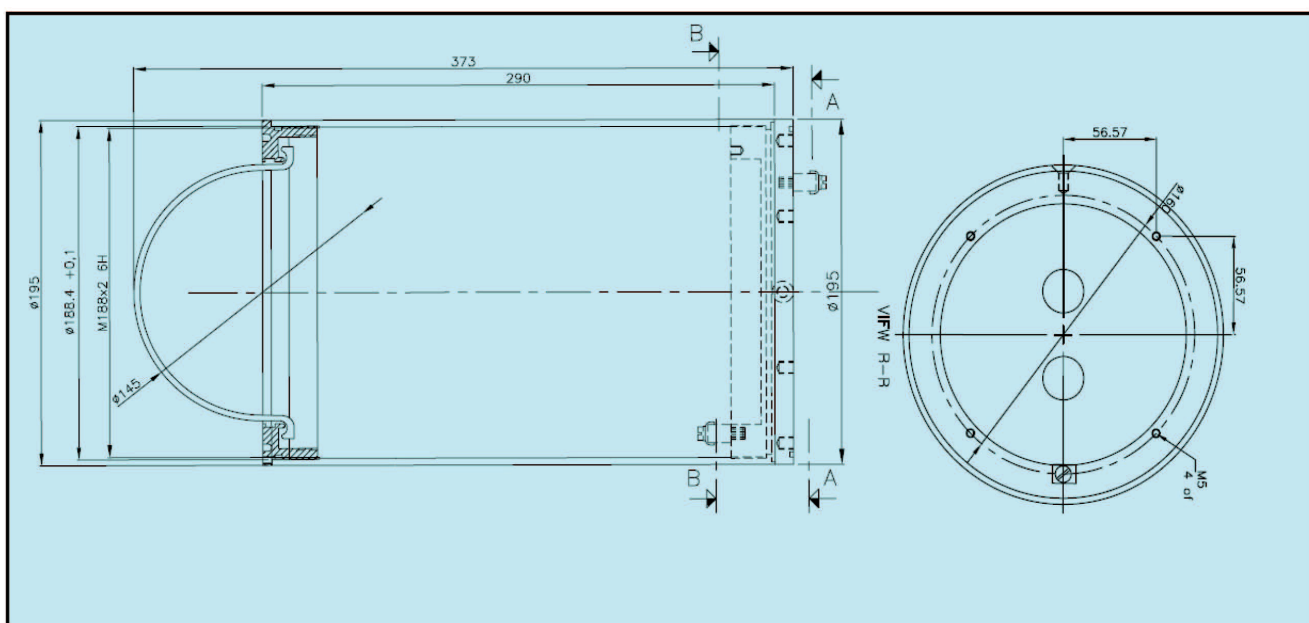
1

Preset, Sequence, Auto pan, Cruise

RS-485

DC 12 / AC 24V

20 W



## Housing specifications

Dimensions 373x Ø195 mm  
 Weight Approx. 14kg  
 Certification ATEX, EExd IIB T6  
 Material Stainless Steel 316  
 Certified Temperature  $-20^{\circ}\text{C}$  to  $+60^{\circ}\text{C}$   
 Ingress Protection IP 66/67  
 Entries 1 x M20 and 2 x M25 (EExd).

All the above specifications, dimensions, weight and tolerances are nominal (typical) and DEXTER reserves the right to vary all data without prior notice. No liability is accepted for any consequence use.

For further details please contact our Support Sales Engineers.

**COMPANY INFO:**  
 COMM-CO  
 KREEKZOOM 9  
 4561 GX HULST  
 THE NETHERLANDS

TEL: +31114-370030  
 FAX: +31114-370029  
 E-MAIL: INFO@COMM-CO.COM  
 WEBSITE: HTTP://WWW.COMM-CO.COM  
 WEBSHOP: HTTP://WWW.ECOMMESHOP.COM

WWW.ATEXSHOP.COM  
 WWW.RUGGEDSHOP.NL  
 WWW.WEBPAINTER.NL  
 WWW.WAVECOM.COM  
 WWW.EYECCTV.NL