

- Explosion-proof certified
- Indoor and outdoor installations
- Built in baked-on enamelled anticorodal aluminium
- Wide range of accessories
- Weatherproof standard IP65



The EXH housings, are made with strong Anticorodal aluminium die-cast alloy of EN-AB 42000-GAS7 group and their chemical composition is defined in the CEI EN 50014 standard. Depending on the model, all external components are stove enamelled using powder or treated with special coatings such as PPA571 and EUROKOTE 711.92 offering an excellent resistance to UV rays, salt-spray, environment polluting substances (mod.003R, mod.005R). They are constructed according to the 94/9/CE ATEX standard and IEC 60079-0:2000, IEC 60079-0:2001, IEC 61241-1:2004 protocols.

EXHC • The cylindrical body of EXHC housing (diameter 210mm and length 400mm) is closed on the opposite sides by two 12mm thick flanges. The housing is equipped with two 3/4" GAS cable glands that allow the wiring. The camera housing is equipped with an internal housing heater and optional sunshield.

EXHD • Explosion-proof housing with the same specifications as the EXHC series but fitted with a patented device for the protection of the glass which gives clear vision in dirty environments.

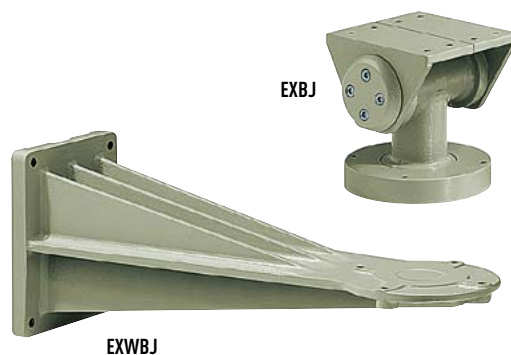
It consists of a connection flange with the housing, a closing flange and an explosion-proof central body containing a rugged transparent glass, a continuous current motor powered in 24V AC, two windings and a transparent Mylar film, installed just in front of the glass. The motor drives, through four pinions with gear rim, the winding for recovering the dirty Mylar film, while at the same time the other winding installed on the opposite side releases the clean film. The motor is remotely controlled through a two wire on-off contact (common and +24V DC).

NOTE: the control unit of the glass protection device is not supplied with the EXHD!

The transparent Mylar film, 80mm wide and 18m long, allows 350 shifting steps. When the film is dirty, the operator will activate the motor shifting the film to obtain a clean camera picture (the step

for allowing the complete shift of the dirty film is about 50mm). The end of the Mylar film will be indicated to the operator through marks printed on the last 50cm of the film.

EXWBJ • Bracket and swivel for EXH series in non-corrosive aluminium alloy (anticorodal). They allow the EXH housing to be firmly attached to the wall. Only the EXBJ allows the column mount.



EXHC-EXHD				
Model	Housing heater	Reinforced heater	Glass protection device	Max consumption
EXHC000	•			20W
EXHC003R		•		60W
EXHD001	•		•	22W
EXHD005R		•	•	62W

EXHC-EXHD

EXPLOSION-PROOF HOUSING



TECHNICAL DATA

GENERAL

Non-corrosive die-cast aluminium (anticorrosive)
 Bicomponent polyurethane enamel with orange peel effect, RAL7032
 Special painting for low temperature, blue color (EXPTC033R, EXPTD035R, EXPTWB00R). Resistant to stress cracking, adverse weather conditions, detergents, salt-spray and typical airborne pollutants
 Supplied with instruction manual and conformity declaration

MECHANICAL

2x3/4" GAS cable glands

External dimensions

EXHC Ø 210mmx427.5mm [8.2x16.8in]

EXHD Ø 250x573.5mm [9.8x22.6in]

Internal dimensions

EXHC Ø 180x380mm [7x14.9in]

EXHD Ø 180x460mm [7x18.1in]

Internal usable area

EXHC 100x100x280mm [3.9x3.9x11in]

EXHD 100x100x360mm [3.9x3.9x14.1in]

Glass window

EXHC Ø 114mm [4.5in]

EXHD 70x56mm [2.7x2.2in]

Device for the protection of the glass

Device for the protection of the glass Ø 250x140mm

Mylar film 80mm [3.1in] wide and 18m [59ft] length, 350 shifting steps, marks printed on the last 50cm [19in]

Wall mount

Payload: 35kg [77lb]

Length: 455mm [17.9in]

Parapet mount

Payload: 35kg [77lb]

ELECTRICAL

Power supply IN 24V AC, 50/60Hz

Heater Ton 10°C +/-4°C(50°F+/-7°F) Toff 25°C +/-3°C(77°F+/-5°F)

- IN 24V AC, consumption 20W max

Reinforced heater Ton 10°C +/-4°C(50°F+/-7°F) Toff 25°C +/-3°C(77°F+/-5°F)

3 resistors in the housing

Consumption 60W max

Glass protection device

- 24V AC, consumption 2W max

Camera equipped with lens

Max power 20W

Power supply 24V AC or 230V AC

ACCESSORIES

EXHS000 Sunshield 650mm for EXHC

EXHS001 Sunshield 760mm for EXHD001

RELATED PRODUCTS

EXWB000 Wall bracket and ball joint for EXHC, EXHD

EXWB00R Wall bracket and ball joint for EXHC, EXHD with special painting

EXBJ000 Ball joint for EXHC, EXHD

EXBJ00R Ball joint for EXHC, EXHD with special painting

ENVIRONMENT

Indoor / Outdoor

Operating temperature with heater: -20°C / +50°C [-4°F / +122°F]

Operating temperature with reinforced heater: -40°C / +50°C [-40°F / +122°F]

COMPLIANCE TO

IECEx (TUV Nord Certification), protocols IEC 60079-0:2000, IEC 60079-1:2001, IEC 61241-1:2004

Ex d: explosion-proof housing for potentially explosive environments

IIC: gases group

T6: device class temperature

Ex tD A21: dust ignition protection, zones type 21-22

IP65: enclosure weatherproof standard

T 85°C: max superficial temperature

ATEX (TUV Nord Certification), directive 94/9/CE

Group: II (surface device, no mining)

Category: 2 (elevated protection degree, the devices of this category can be installed in zone 1 and 21 and in zone 2 and 22)

Atmosphere type: GD (gases and dusts)

EEx d: explosion-proof housing for potentially explosive environments

IIC: gases group

T6-T85°C: temperature classification for gases and dusts respectively

IP65: enclosure weatherproof standard

EXHC000 - EXHD001 - EXHC003R - EXHD005R

Ex d IIC T6 Ex tD A21 IP65 T85°C IECEx

Ⓢ II 2 GD EExd IIC T6 T85°C IP65 ATEX

Ⓢ 0044: notify number from competent body

UL certification pending

GHOST certification pending

SPARE PARTS LIST

OCTEX3/4 3/4" cable gland for EXHC and EXHD housing

OEXGOM Gaskets for cable glands 3/4" not armored

OEXVET Front flange complete with glass for EXHC000

OEXDPV Front flange complete with glass protection device for EXHD001

OEXMYLAR Mylar film replacement kit, 18m [59ft] 350 steps

OSLIEX Internal slide complete with heater for EXHC

OSLIEXD Internal slide complete with heater for EXHD



Unit Weight:

EXHC 15 kg / 33lb

EXHD 24kg / 52.9lb

EXWB0 6.6kg / 14.5lb

EXBJ 2.9kg / 6.4lb

Package Weight:

EXHC 17.5kg / 38.6lb

EXHD 24kg / 52.9lb

EXWB0 7kg / 15.4lb

EXBJ 2.9kg / 6.4lb

Package Dimensions (BxHxL):

EXHC 61x32x31cm / 24x12.6x12.2in

EXHD 43x67x67cm / 16.9x26.3x26.3in

EXWB0 27x18x49cm / 10.6x7x19.3in

EXBJ 16x21x12cm / 6.3x8.3x4.7in

Master Carton:

EXHC -

EXHD -

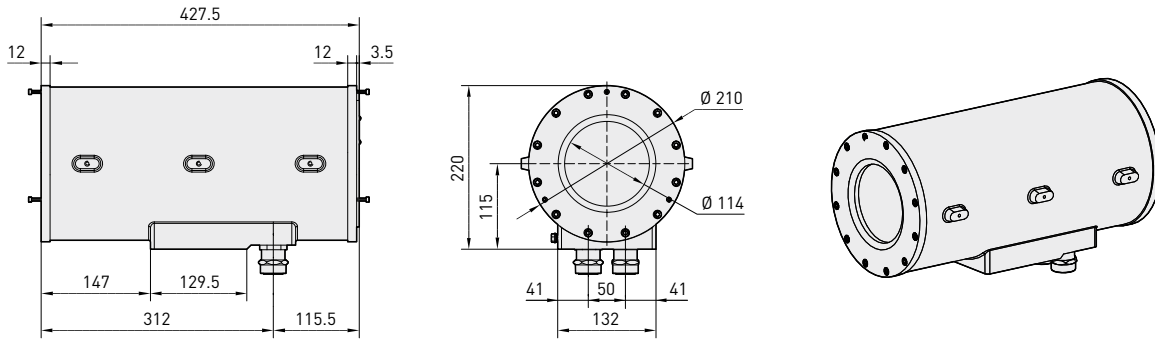
EXWB0 -

EXBJ -

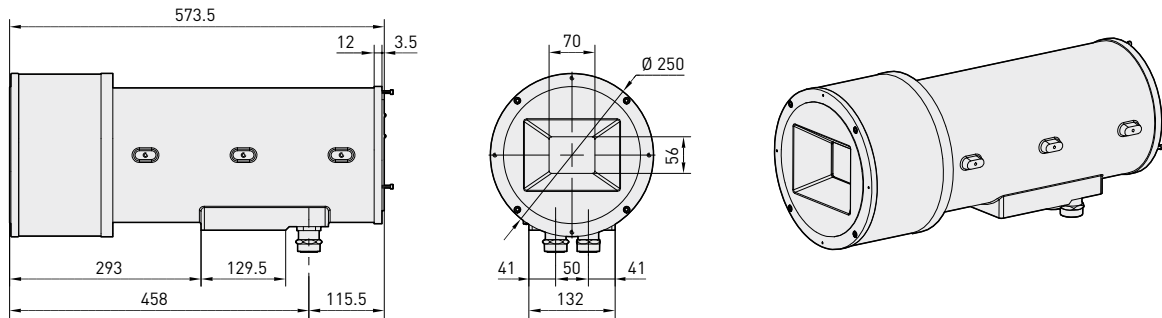
EXHC-EXHD

EXPLOSION-PROOF HOUSING

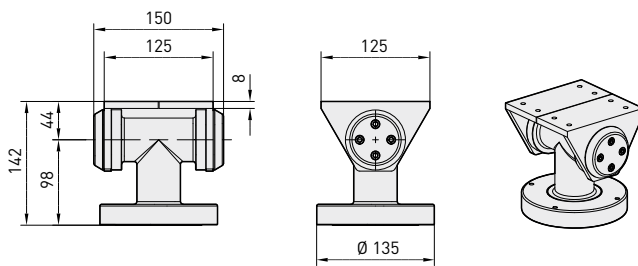
EXHC



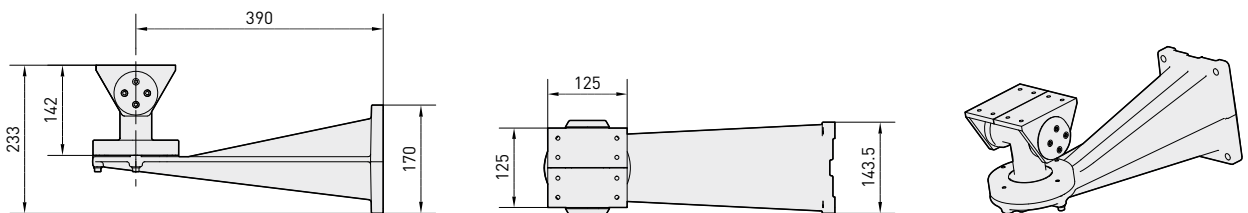
EXHD



EXBJ



EXWBJ



The values are in millimeters.

