

ALGIZ 7

Manual

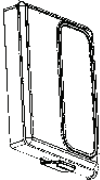






comm-co



handheld

Accessories

Item	Description	Note
	<p>2 Cell Li-Polymer Battery Packs</p>	<p>Hot-swappable for battery change</p>
	<p>1 CD for System Driver Utility.</p>	
	<p>1 12V Adapter w/ Standard Power Cord. Euro / U.S. Std type, 1.8m</p>	

Item	Description	Note
	<p>1 Recovery DVD for the Operating System (Windows 7).</p>	
	<p>1 Windows 7 Recovery User's Guide.</p>	

Copyright Notice

Copyright © 2010 Handheld Group AB, ALL RIGHTS RESERVED. No part of this document may be reproduced, copied, translated, or transmitted in any form or by any means, electronic or mechanical, for any purpose, without the prior written permission of the original manufacturer.

Trademark Acknowledgement

Brand and product names are trademarks or registered trademarks of their respective owners.

Disclaimer

Handheld Group AB reserves the right to make any product changes without notice, including circuits and/or software described or contained in this manual in order to improve design and/or performance. Handheld Group AB assumes no responsibility or liability for the use of the described product(s), conveys no license or title under any patent, copyright, or masks work rights to these products, and makes no representations or warranties that these products are free from patent, copyright, or mask work right infringement, unless otherwise specified. Applications that are described in this manual are for illustration purposes only. Handheld Group AB makes no representation or warranty that such application will be suitable for the specified use without further testing or modification.

Warranty

Handheld Group AB warrants that each of its products will be free from material and workmanship defects for a period of one year from the invoice date. If the customer discovers a defect, Handheld Group AB will, at its option, repair or replace the defective product at no charge to the customer, provided it is returned during the warranty period of one year, with transportation charges prepaid. The returned product must be properly packaged in its original packaging to obtain warranty service.

Customer Service

Support for most of the problems are provided as per the following steps First, visit our website at www.handheldgroup.com to find updated information about the product. Secondly, contact your distributor, sales representative, or our customer service center for technical support if you need additional assistance. You might need to have the following information ready before you call

- Product's serial number
- Peripheral attachments
- Software (OS, version, application software, etc.)
- Description of complete problem
- The exact wording of any error messages with print screen images

In addition, free technical support is available from our engineers during working hours. We are always ready to give advice on application requirements or specific information on the installation and operation of any of our products. Please do not hesitate to call or e-mail us.

Manufacturer: Handheld Group AB

Address: Handheld Group AB, Kinnegatan 17 A, S-531 33, Lidköping, Sweden

TEL: +46 (0) 510-54 71 70

FAX: +46 (0) 510-282 05

Safety Precautions

Warning!



Always disconnect the power cord from the unit whenever you work with the hardware. Do not plug the device into the power socket when the device's power is on. Sensitive electronic components can be damaged by sudden power surges. Only experienced personnel should open the unit's mechanical housing.

Cauton!



Always ground yourself to remove any static charge before touching the CPU card. The electronic devices are very sensitive to static electricity. As a safety precaution, use a grounding wrist strap all the time. Place all the electronic components in a static-dissipative surface or static-shielded bag when they are not in the chassis.

UL Safety Approved



UL Classification: Class I mark: with respect to electronic shock; Fire and hazardous material conforms to the requirements of UL-60950 and CAN/CSA C22.2 No. 601.1.

Power Supply Announcement

The Handheld Rugged Tablet PC Power Supplies include Power Adapter and Battery Pack. The power rating and manufacturer information is listed as below.

Power Adapter	Manufacture: EDAC Power Electronics Co Ltd Model: EA1050C-120 Input Rated: 100-240Vac, 1.8A, 50-60Hz. Output Rated: DC <u> </u> 12V,4.16A.
Battery Pack	Manufacture: JHT energy International Co Ltd Model: RTB-1 Rated: 2600mAh DC 7.4V

Power Notice!




(1) The power cord of the adapter should be earthed.



(2) Power Standby mode: Push the power button for at least 4 seconds to go to standby. (See Chapter 2.1 Turning the Tablet PC On and Off)

Battery Notice!

 **WARNING:**
 Do not repair or replace battery, it may cause explosion! Only use the specified battery by following the manufacturer's instruction.

Content

CHAPTER 1 - SPECIFICATION	
1.1 SYSTEM SPECIFICATION	9
1.2 HOW TO USE THE TABLET PC.....	10
1.3 LED INDICATOR	11
1.4 USING THE BATTERY PACKS	12-14
1.5 THE BATTERY LIGHT SIGNAL INSTRUCTION.....	15
1.5.1 Battery Charging Mechanism:.....	15
1.5.2 Battery Discharging Mechanism:	16-17
CHAPTER 2 - USING THE SOFTWARE	
2.1 TURNING THE TABLET PC ON AND OFF	19
2.1.1 Turning on the Tablet PC	19
2.1.2 Turning off the Tablet PC.....	19
2.2 HOW TO USE THE SOFTWARE.....	20
2.3 HOT TAB SOFTWARE UTILITY FUNCTIONS	21-24
2.4 GPS SETUP	25
2.5 SIM INSTALLATION GUIDE.....	26-27
2.6 WAN SOFTWARE.....	28

Chapter 1

Specification

This User Manual describes the use of an Algiz 7 with Microsoft Windows 7 OS, but other operating systems can also be used. Please contact your supplier for further information.



The Algiz 7 is a compact high performance, low weight rugged Tablet PC designed for outdoor & fieldwork usage. The Algiz 7 can withstand severe environmental conditions including vibration, shock, moisture and temperature variations. The Algiz 7 is suitable for use in harsh environments such as construction sites, warehouses, military, manufacturing and field service. The Algiz 7 tablet pc is delivered with two batteries and an AC power adapter.

This Chapter details the specification for the 7" Handheld Tablet PC Algiz 7.

1.1 System Specification

System	
Processor	Intel® ATOM™ Z530
BIOS	AMI System BIOS
Chipset	Intel US15W
Memory	1 x SODIMM, Max 2GB DDR2 400/533 (Default 2GB)
LAN Controller	Realtek RTL811B Chipset, 10/100/1000 Mbps
Storage	PATA interface support Mini-PCIe interface SSD (Default 64GB)
Audio	Audio out for headset, Micro-in for microphone jack, 1.5W Speaker (Internal)
I/O Connectors	
Left I/O Port	1x Micro-In, 1x Audio Out, 1x Giga LAN, 1x USB, 1x DC Power Jack
Right I/O Port	1x RS232, 1x USB (IP67 Sealed)
In Front Control	
Control Button	1x Power On/Off, 1x Menu, 1x Up, 1x Down, 1x Left, 1x Right 3x Programmable Hotkeys
LED indicator	1x Power Status, 1x HDD Status, 2x Battery Status, 1x Wireless Status
Display Specification	
Size	7" (16:9)
Resolution	1024x600
Brightness	600 nit Maxview Technology
Touch	4 Wire Resistive Touch
Power Management	
Power Input	12 V DC @ 4.16A
Power Consumption	6-9W
Battery	Li-Polymer 7.4V 2S1P, 2600mAh
Adapter	100-240V, 50-60Hz, 12VDC

1.2 How to Use the Tablet PC

This section describes how to use the Tablet PC.



Ref	Component	Description
1	Power On Button	PUSH for 4 seconds to turn on the tablet pc
2	LED Indicator	Shows the Power Status, HDD Status, Left and Right Battery Status, and Wireless Status
3	Menu	Push Menu to show Brightness, Volume, Battery status and Wireless Enable/Disable.
4	F1 – F3 Hotkey	6 programmable Hot-key functions for user to define by application, default first short push key (F1 short) will turn-on help Menu
5	Up/Down/Left/ Right/OK Button	Use the UP, DOWN, LEFT, RIGHT and ENTER keys to navigate.

1.3 LED Indicator

LED Term	Indicator Status Description
Power mode	Green: System is On. No Light : System is Off
Battery Status	No Light: fully charged or power on with AC adapter Orange Light: on charging Red Light: Low Battery warning < 3% , or dead battery. No Light: fully charged or power on with AC adapter
Storage Status	Blinking green Light: HDD is reading/writing data
Wifi status	Green Light blinking: Wifi is using No Light: Wifi is not working

1.4 Using the Battery Packs

This section describes the charging the battery pack.

Charging the Battery Pack

Before you use your Handheld tablet PC, you need to charge the battery pack. The battery pack begins to charge as soon as the Handheld tablet PC is connected to the external power source. Please fully charge the batteries before using them for the first time. The new battery packs must be fully charged before the tablet PC is disconnected from the external power source. The battery pack is fully charged when the battery light indicator turns OFF. It takes about a couple of hours to fully charge the battery when the Handheld tablet PC is turned OFF.

Battery Care

The Handheld tablet battery pack, like all rechargeable batteries, has a limit on the number of times it can be fully recharged. Fully draining and charging the battery once a day will make the batteries last over a year, but rechargeable time limits are based on your environmental temperature, humidity, and how your tablet PC is used. The ideal environment temperature range is between 10°C and 29°C (50°F and 85°F).

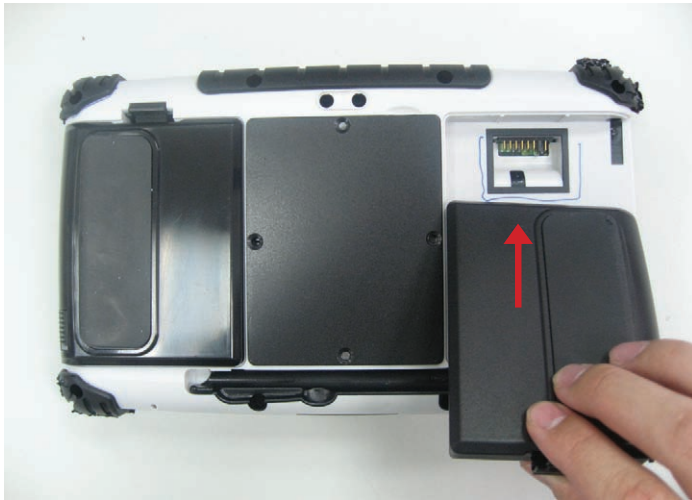
Battery Power System

This tablet PC is designed to work with two removable battery packs placed inside the battery pack compartment. The fully charged battery packs will provide several hours of battery life, which can further be extended by using power management features through the BIOS setup. The system includes a power management software which allows the battery to accurately report the amount of charge percentage left in the battery.

Charging the Battery Pack

You can charge the battery pack by using the power adapter. When the power adapter is plugged in, the inserted battery packs automatically recharges whether your tablet PC is in the ON or OFF mode. It takes about a couple of hours for the battery to be fully charged when the power is OFF but takes twice as long when the tablet PC is in use. When the red charger LED indicator indicates orange, charging is required. The battery is charging when the red LED is solid. When the LED is turned OFF, the battery pack is fully charged.

Insert the battery pack



- ① Insert the battery pack into the battery slot.

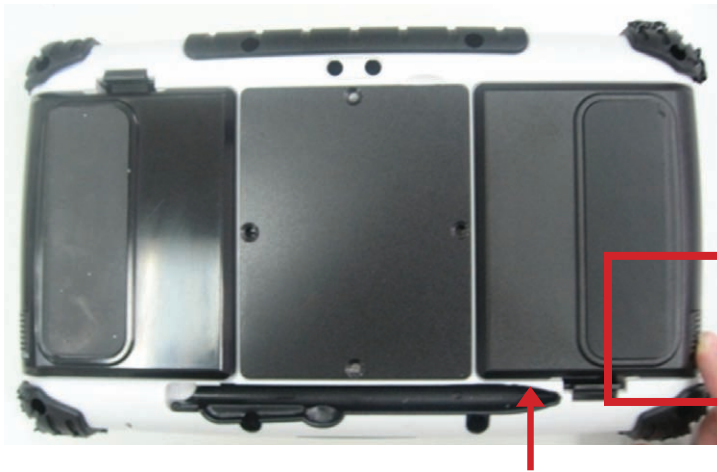


- ② Press down the compression lock into the tablet pc.

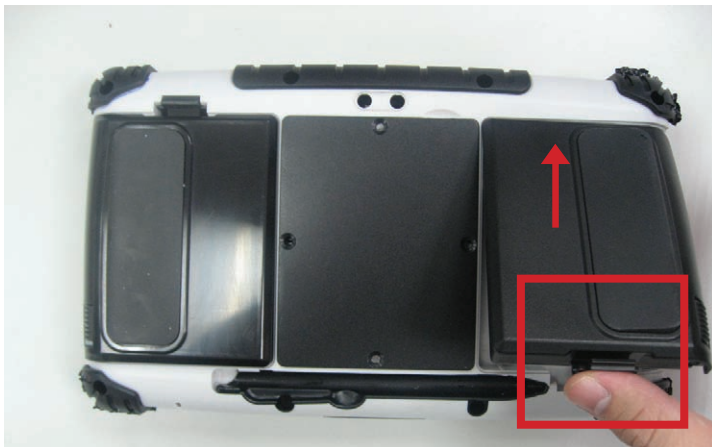


- ③ Press the latch down to fasten the battery on the tablet PC

To remove the Battery



- ① Slide the latch up to release the battery cover



- ② Push up the lock from the tablet pc.



- ③ Take out the battery pack from the battery slot.

1.5 The Battery Light Signal Instruction

Charging procedure for the two battery packs. When the tablet pc is connected to the power source, the battery packs start charging.



1.5.1 Battery Charging Mechanism:

Balance of Battery Charging Mode:

Both the battery packs are at a low power level which is about 5%

- a. If the first battery's power level is 5% more than the second battery, the PC will charge the lower power battery first.
- b. If the first battery's power level is more than the second battery by less than 5%, the PC will charge both the batteries.

Dual Battery Charging Mode:

Both the battery packs are at a low power level which is about 10%

- c. If both the batteries' power level is below 10%, the PC will charge both the batteries together.
- d. If both the batteries' power level is more than 10%, the PC will change the charging mode to the balance charging mode.
- e. If one battery is fully charged, the other is at a low power level, the PC will charge the battery which is at a low power level.
- f. If both the batteries are fully charged, the PC will switch off the charging current.

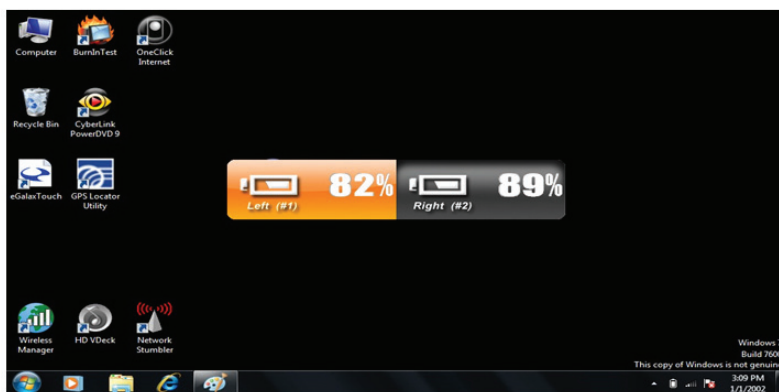
1.5.2. Battery Discharging Mechanism:

Battery discharging mechanism is showed as following:

- a. Left Battery / Right Battery are located at the rear side.



- b. The left battery status shows as discharged and the OSD indicator shows the discharging status as shown in the following pictures.



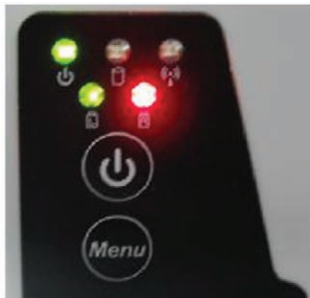
1.5.2. Battery Discharging Mechanism:



c. Give a long push to the <F3 > button to switch the discharging status between left and right battery



d. The discharging status of the right battery is shown on both the screen and the OSD indicator.



e. Critical battery level: 3% below
The system is not allowed to switch the discharge status between left & right battery.

f. The left battery is discharging and the right battery is in the critical battery status.

(L: green / R: red)



g. The right battery is discharging and the left battery is in the critical battery status.

(L: red / R: green)



h. Both the left right batteries are in the critical battery status.

(L/R: both red)

Chapter 2

Using the Software

This Chapter will guide you how to operate the Tablet PC, including starting / shutting down the PC, and how to use the menu function including basic hardware function adjustment and the Hot Tab hotkey utility software that is very easy & helpful for operating the computer.

2.1 Turning the Tablet PC On and Off

2.1.1 Turning on the Tablet PC

Your device has a SD (Secure Digital) card slot where you can insert an SD/SDHC memory card or SDIO card. To insert an SD card:

- a. Place your tablet PC on a flat and stable surface or hold the tablet PC in your hand.



- b. Make sure the tablet PC is either connected with the AC power adapter or the batteries are charged up.
- c. Press the power button for at least 4 seconds to turn it on.

2.1.2 Turning off the Tablet PC

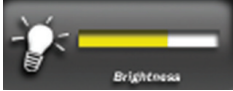





Turn off the tablet PC by using the “Shut Down” command of your operating system.



CAUTION: If you have to turn the tablet PC on again immediately after turning it off, please wait for at least five seconds. Turning the tablet PC off and on in rapid succession can damage the whole device.

2.2 How to use the software

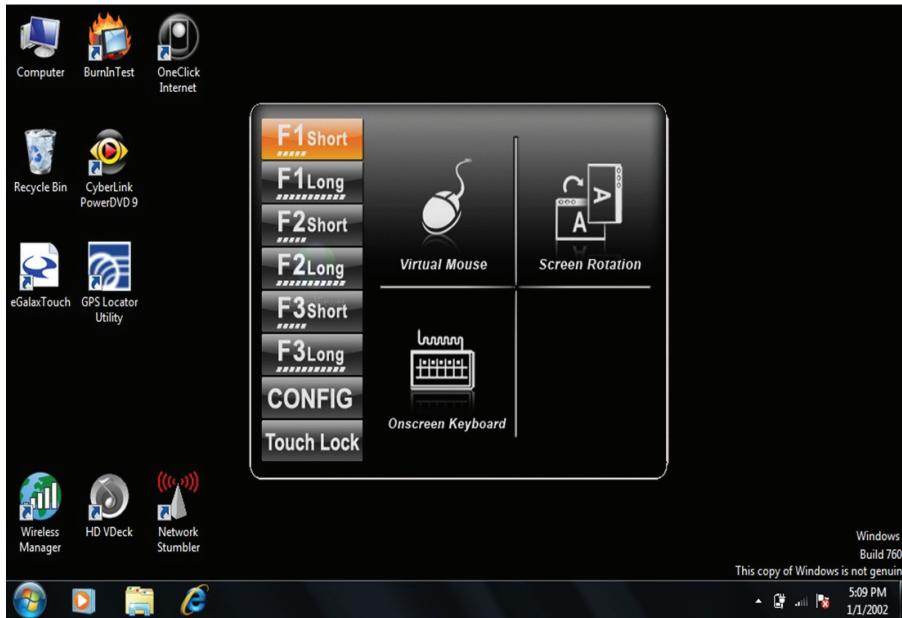
Hot-Tab Hotkey Function

PUSH Menu Button	Function Description	Function Adjustment
1st Time	Show Current Brightness 	Click "Left/ Down" button to increase brightness (Or Drag by Touch) Click "Right/ Up" to decrease brightness(Or Drag by Touch) Click "OK" to save the changes and exit UI.
2nd Time	Show current Volume 	
3rd Time	Show current Battery Usage and Battery status for both the batteries 	
4th Time	Show the status of the Wireless communication function 	Use the touch button to select the wireless communication. Then select Enable/ Disable
5th Time	Show the software version of a. Hot TAB Utility version b. BIOS / EC version	
PRESS for 4 sec	Lock/Unlock buttons Press for 4 seconds to Lock buttons**(not including Touch)	Press for 4 seconds to Unlock buttons 

2.3 Hot TAB Software Utility Functions

F1 Hot TAB functions shows four functions

a. The first is a virtual mouse



b. Screen rotation



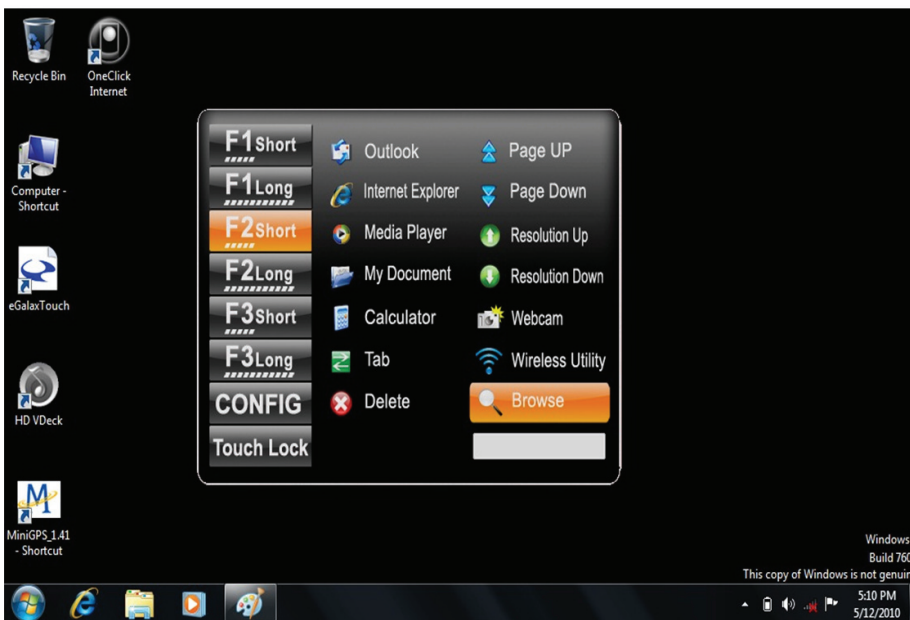
2.3 Hot TAB Software Utility Functions

c. Onscreen Keyboard



d. F2 and F3 hotkeys

You can use "browse" and select the desired program file.



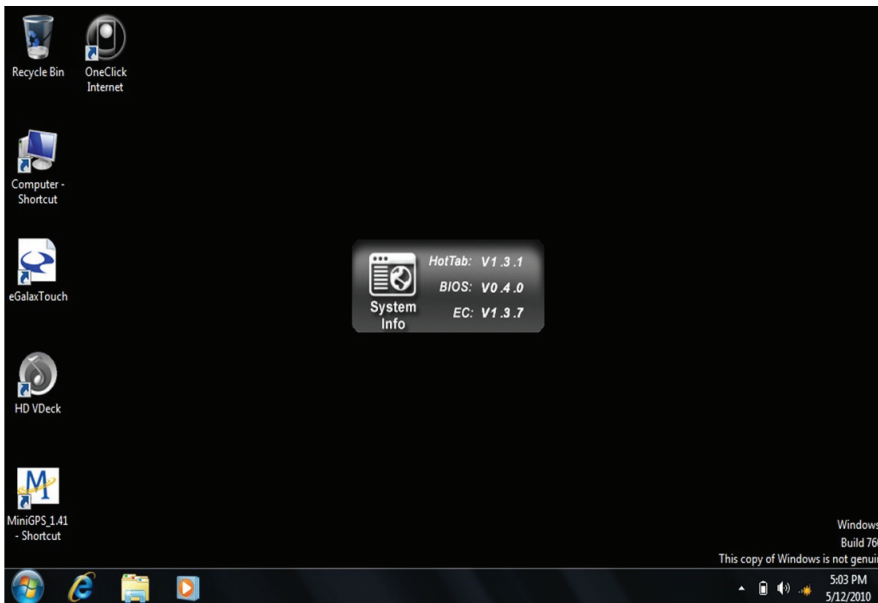
2.3 Hot TAB Software Utility Functions

e. Power Management Display System Information



f. System Information

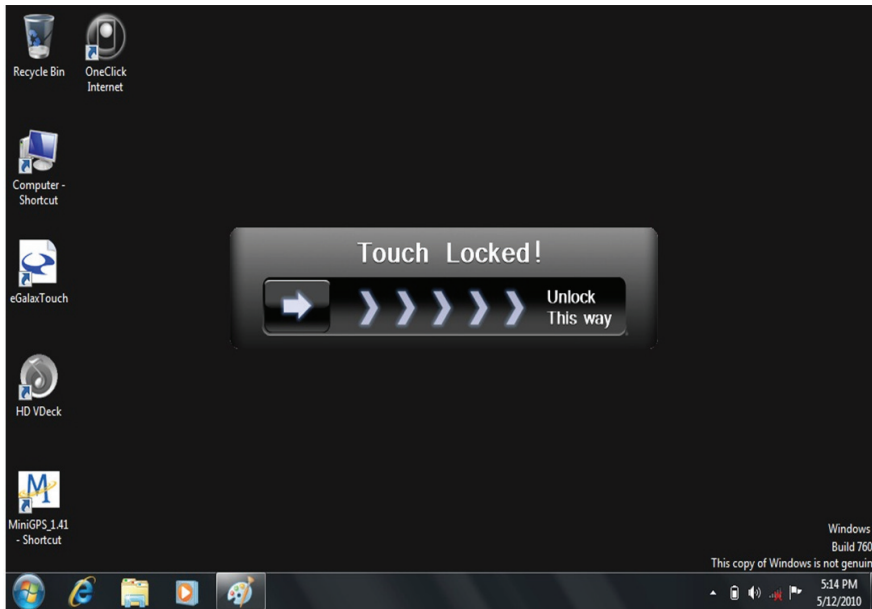
When you press menu for the 3rd time, you can see the system information.



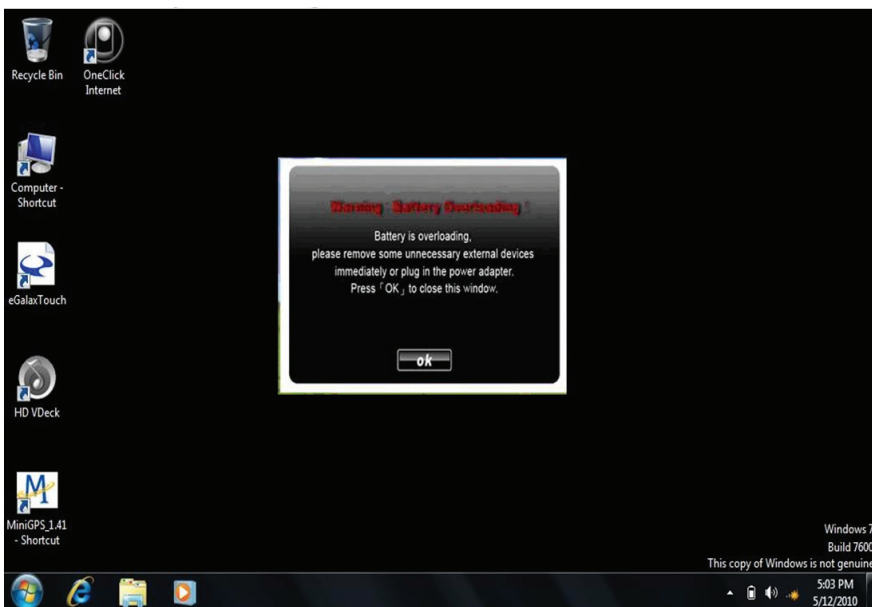
2.3 Hot TAB Software Utility Functions

g. Touch Lock:

Select the touch lock icon to lock the touchscreen. Use the onscreen slide to unlock.

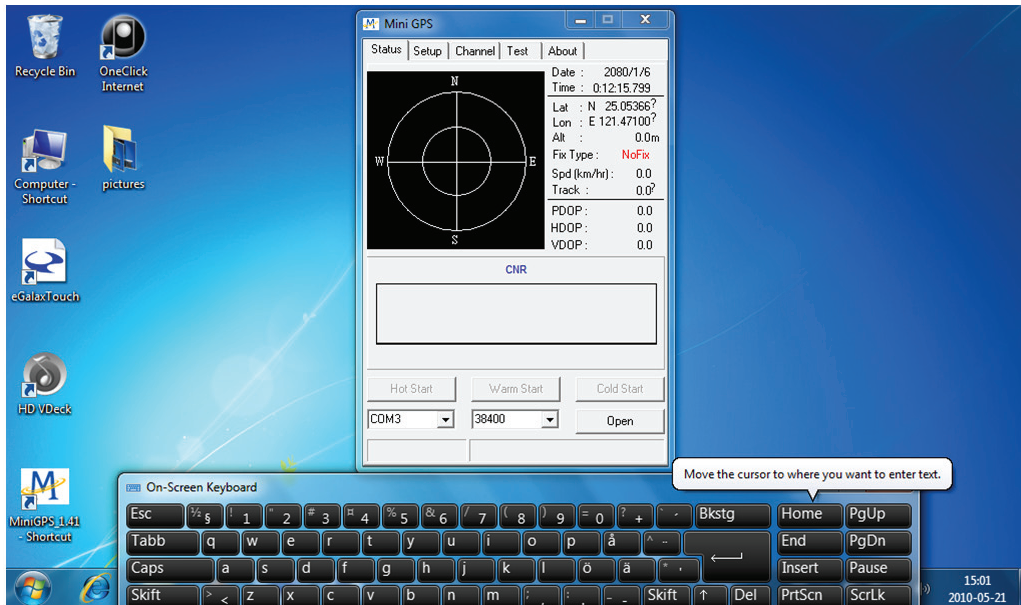


h. Low battery warning notice:



2.4 GPS Setup

- a) Click on “Menu” four times on the right keypad of the Algiz 7 and make sure that the “GPS” box is checked.
- b) Click on MiniGPS_1.41 – Shortcut on your desktop.



- c) Set the COM port to COM 3 and the baud rate to 38400.
- d) Click “Open”
- e) Done

2.5 SIM Installation guide

a) Start by unscrewing the 4 screws on the back as described below, using a screwdriver.



b) Unscrew the small silver screw in the lower left corner on the WLAN card.



c) Lift the WLAN card (gently) and pull it out towards yourself.

2.5 SIM Installation guide



d) Gently turn the card to the left and open the SIM card holder.



e) Insert the SIM card and lock it in place as described on the SIM card holder.



f) Place the WLAN card back to its original position by inserting it in its connector and gently hold down the card while you attach the silver screw.

g) Replace the back cover and tighten the 4 screws and you are done.



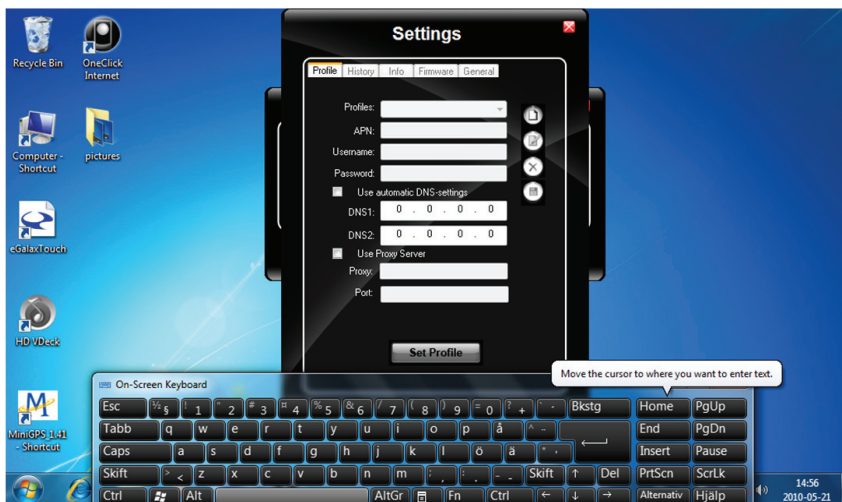
2.6 WAN Software



- a) Insert the SIM card before proceeding.
- b) Click on "Menu" four times on the right keypad of the Algiz 7 and make sure that the box "3G" is checked.



- c) Once the modem has been activated, click on "OneClick Internet" shortcut on your desktop.
- d) Press connect and the software will automatically load the required settings, please hold until it indicates connected.
- e) You are now connected and can use Internet Explorer to access the internet.
- f) If it does not load the correct settings, press on the button "Settings" and select the correct settings manually.



- g) Save the profile and connect again.