

SPECIFICATION

Power supply

Voltage	10 to 28V from a Zener barrier or galvanic isolator.	
Current	22mA max plus 16mA for the optional backlight.	

Input A & b

	Lower	Upper	switching thresholds
Switch contact	100Ω	1kΩ	
Proximity detector (NAMUR)	1.2mA	2.1mA	
Open collector	2kΩ	10kΩ	
Magnetic pick-off	0	+40mV	
Voltage pulse (low)	1V	3V	28V max
Voltage pulse (high)	3V	10V	28V max

Display

Type	Liquid crystal
Primary	18mm high
Secondary	12mm high
Format	hh:mm:ss ; hh:mm ; mm:ss or s

Remote Timer reset & Clock sync.

Contact closure with resistance less than 10kΩ.

Timer

Status output	Isolated, voltage free, open collector, certified as a separate intrinsically safe complying with the requirements for <i>simple apparatus</i> .
Ron	51Ω + 3V max
Roff	1MΩ min
I max	10mA

Maximum duration 99h 59m and 59s or equivalent in any display format.

Maximum delay between cycles. 99h 59m and 59s or equivalent in any display format.

Grand total run-time 5x10⁶ hours maximum

Clock

Timekeeping accuracy Less than ±0.43s error per day over operating temperature range.

Intrinsic safety

Europe ATEX Code	Group II Category 1G Ex ia IIC T5 Ga
Cert. No.	-40°C ≤ Ta ≤ 70°C ITS16ATEX28408X
International IECEx Code	Ex ia IIC T5 Ga
Cert. No	-40°C ≤ Ta ≤ 70°C IECEx ITS 16.0004X
ETL & cETL Code	Class I Div 1 Gp A, B, C, D T5 (USA & Canada) Class II Div 1 Gp E, F, G. Class III Div 1 (USA & Canada) Class I Zone 0 AEx ia IIC T5 Ga (USA) Ex ia IIC T5 Ga (Canada) -40°C ≤ Ta ≤ 70°C

Nonincendive USA & Canada Code

ETL & cETL
Class I Div 2 Gp A, B, C, D T5
Class II Div 2 Gp F, G. Class III Div 2
-40°C ≤ Ta ≤ 70°C
4008610

Environmental

Operating temp	-40 to +70°C display -20 to +70°C
Storage temp	-40 to +85°C
Humidity	to 95% at 40°C non condensing
Vibration	Report available
Enclosure	Noryl SE1GFN3. Front IP66, rear IP20
EMC	Complies with 2014/30/EU

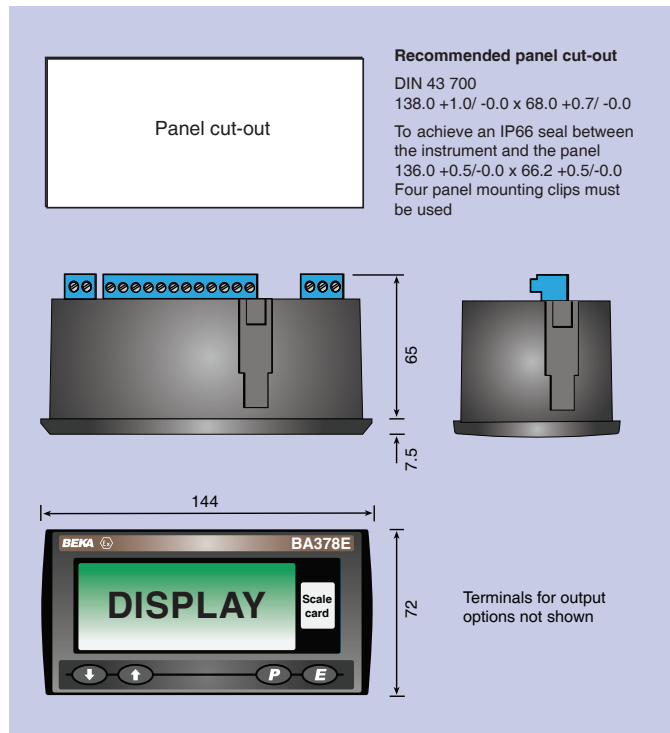
Mechanical

Terminals	Screw clamp for 0.5 to 1.5mm ² cable, removable terminal blocks.
Weight	0.35kg

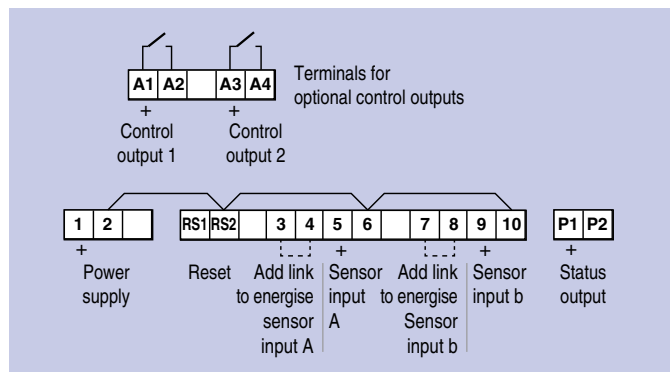
Accessories

Backlight	Green LED internally powered
Control outputs	Two outputs each of which may be independently configured as a NO or NC output.

DIMENSIONS (mm)



TERMINAL CONNECTIONS



Outputs	Isolated single pole, voltage free solid state switch.
Ron	5Ω + 0.7V max
Roff	1MΩ min
Scale card	Blank card fitted to all instruments. Can be supplied typeset with specified units of measurement for no additional charge at time of purchase. ~
Tag legend	Specified tag number or application printed onto rear of instrument. ~

~ See accessory datasheet for details