

BATTERY POWERED,
CELLULAR GATEWAY
FOR SENSOR
MONITORING



DIGI CONNECT[®] SENSOR+

Easy-to-install and roll-out ready, battery-powered cellular gateway solution

Digi Connect Sensor+ is a fully integrated, battery powered cellular gateway with I/O for connecting to a wide range of external sensors. Designed to work in rugged industrial environments, the Connect Sensor+ is the ideal solution for companies looking to add remote monitoring and diagnostics in places where power is not easily available. Its easy installation, reliability and low data usage make remote monitoring possible in areas where it was previously cost prohibitive.

Local protocol support allows the Connect Sensor+ to communicate with Wired HART and/or Modbus sensors and capture sensor diagnostics along with data. This enables users

to not only monitor their data but also remotely diagnose the health of their sensors. Digi Connect Sensor+ leverages Digi Remote Manager[®], enabling customers who need to monitor large numbers of sensors to easily integrate that data into existing applications or work with third-party applications

Digi Connect Sensor+ works with Digi Connect Wizard. This smartphone application is the first of its kind for this type of battery powered gateway. It gives local installers, technicians or drivers instant feedback of sensor values over Bluetooth.

BENEFITS

- Weatherproof enclosure with wide temperature range makes it ideal for use in all environments
- Configurable read and report intervals with threshold and delta alarms
- Multiple configurable I/O make it possible to connect to multiple sensor types
- Wired HART and Modbus protocol support
- External, configurable power outputs eliminate the need for sensor power supplies
- Global cellular coverage

RELATED PRODUCTS



Digi Connect Tank



Digi Remote Manager[®]



Antennas and Accessories

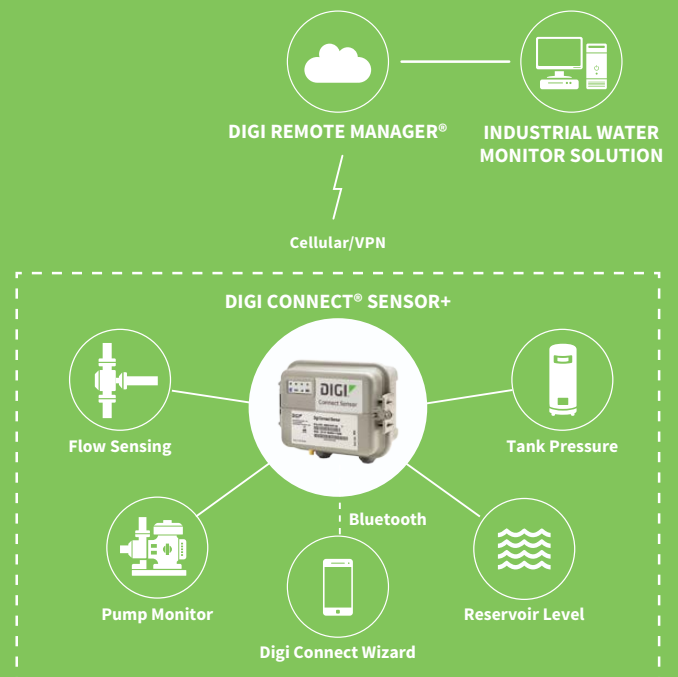


Digi TransPort[®] WR31



Bundle Services

APPLICATION EXAMPLE



SPECIFICATIONS		Digi Connect® Sensor+	
WWAN			
2G BANDS		GSM 850, GSM 900, DCS 1800, PCS 1900	
3G BANDS		FDD B1, B2, B4, B5, B8	
LTE CATEGORY 1		Verizon: Bands 2, 4, 13 AT&T, T-Mobile: Bands 2, 4, 5 with 3G/2G fallback	
ANTENNA CONNECTOR		External SMA	
SIM SLOTS		1, Standard size	
MANAGEMENT			
CONFIGURATION AND MANAGEMENT		Digi Remote Manager/Local USB to Serial CLI	
POWER (Does not include power draw of external sensors)			
EXTERNAL POWER INPUT RANGE		8 VDC to 30 VDC	
BATTERY AND BATTERY LIFE		7.2 V, 14.5 Ah, Lithium thionyl chloride, non-rechargeable, replaceable; Approximately 2 years (@ 2 reads/transmits per day)	
POWER DRAW, SLEEPING		86.4 uW	
POWER DRAW, CONTINUOUS MONITOR		400 mW	
POWER DRAW, PEAK TRANSMIT		14.4 Watts	
SENSOR PROTOCOL SUPPORT			
WIRED HART		HART 5,7	
MODBUS		MODBUS RTU AND ASCII, Connect to up to 4 devices	
ANALOG I/O			
INPUTS		4, Configurable as 4/20 mA or 0-10 VDC Analog inputs	
INPUT VOLTAGE RANGE		0-10.5 V (Analog input)	
INPUT CURRENT RANGE		4-22 mA (Current loop input)	
DIGITAL I/O			
PORTS		1 digital I/O or pulse counter input	
INPUT RANGE		0-0.6 VCD logic low; 2.2 V-30 VDC logic high	
MAX INPUT VOLTAGE		30 VDC	
MAX PULSE COUNT FREQUENCY		2 KHZ	
DIGITAL OUTPUT		Open collector output, max sink current 450 mA	
OUTPUT POWER			
PORTS		5	
OUTPUT VOLTAGE OPTIONS		3.3, 5, 15, 24 VDC	
MAX CURRENT OUTPUT		200 mA	
ENVIRONMENTAL			
OPERATING TEMPERATURES		-35° C to +70° C	
STORAGE TEMPERATURE		-40° C to +85° C	
RELATIVE HUMIDITY		90%	
BATTERY DISCHARGE		<1%/year if stored at +30° C	
PHYSICAL			
DIMENSIONS (L x W x H)		152.4 mm x 108.4 mm (127 mm including glands) x 74.6 mm	
WEIGHTS		264 g	
LEDS INDICATORS		Battery, cellular, sensor and Bluetooth	
ENCLOSURE MATERIAL		Lexan	
REGULATORY APPROVALS			
SAFETY		UL60950-1, CAN/CSA C22.2 No. 60950-1-01, IEC 60950-1:2005 (Second Edition); Am1:2009 + Am2:2013, EN 60950-1:2006 / A11:2009 / A1:2010 / A12:2011 / A2:2013 and EN 60950-22:2006; Class 1, Division II, groups A,B,C,D; ANSI/ISA 12.12.01:2015,CAN/CSA C22.2 No 213-15, 1st Ed ATEX (pending) EN 60079-0:2012+A11:2013, EN 60079-15:2010, eII 3 G Ex nA nC IIC T6 Gc	
EMISSIONS		FCC part 15 Subpart B class B, EN55022: 2010/AC: 2011 class B, IECs-003 Issue 5: 2012 class B	
IMMUNITY		EN55024:2010	
WARRANTY			
PRODUCT WARRANTY		3 years, excluding battery	

PART NUMBERS	DESCRIPTION
CSENSE-A210	Connect Sensor+, Verizon LTE
CSENSE-A310	Connect Sensor +, AT&T and T-Mobile LTE
CSENSE-A710	Connect Sensor+, Global 3G/2G

Antennas are sold separately

Comm-Co B.V.
 Kreekzoom 9, 4561 GX, Hulst
 The Netherlands
 Tel: +31 114-370030
 Email: info@comm-co.com

COMM-CO
Communication today and tomorrow