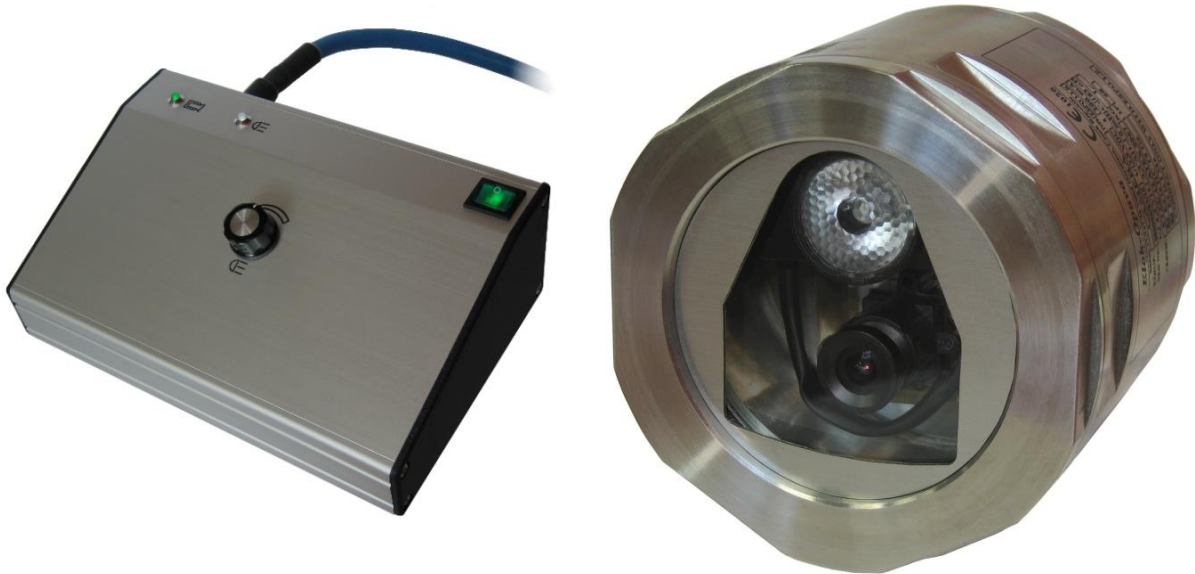


CCTV Camera System

ESPO-1



Zone	0	1	2
	✓	✓	✓

I M1 Ex ia I Ma
II 1G Ex ia IIC T4 Ga

A complete and extremely robust camera system for transmission of a video signal from inside Ex-zone 0 to outside the hazardous area. The system can be used to monitor the inside of pipelines, tanks, silos, chemical production, waste and other hazardous process during production, inspection and cleaning. The system can also be used for monitoring and event control.

- Unique – **Ex-zone 0**
- Includes a powerful integrated **LED light**
- Maximum distance 120 m
- High ingress protect **IP68**
- Can be submersed in petrol
- Ambient temperature -10°C to +40°C
- Control Unit output **PAL** (direct to monitor), **LAN** (IP Camera) or **WiFi** (direct to mobile/tablet)

The system comprises two parts: the Ex-zone 0 camera and the “safe area” control box.

The camera is mounted in a stainless steel enclosure with a glass front and is powered by an intrinsically safe power supply. As standard the unit is equipped with a wide-angle lens and a high intensity LED light.

The control box is located outside the hazardous area. It supplies the camera with intrinsically safe power and controls the light intensity, various outputs are available for various applications.



System ESPO-1

Certificate FTZÚ 12 ATEX 0067

Camera

Protection II 1G Ex ia IIC T4 Ga
I M1 Ex ia I Ma

Ingress Protection IP68
Constant submersion to 1 m
depth water or petrol

Ambient Temperature -10°C to +40°C

Electronic Shutter 1/50 – 1/100 000 s

Sensitivity 0.05 Lux / Faceplate

Integrated Light 0 – 235 Lux

Output Connection 6 pin connector

Enclosure Material Stainless Steel

Dimensions Ø 82 x 71 mm

Weight 1.3 kg

Fixed Mounting Points 3x M8x7

Options

- Wide angle lens f3 - 90° (22 mm equivalent) – order: **ESPO-1CW**
- Short tele lens f3 - 30° (80 mm equivalent) – order: **ESPO-1CT**
- IP 68 submersion to 25m water depth on request.

Control Unit

Protection II (1)G [Ex ia Ga] IIC
I (M1) [Ex ia Ma] I

Ingress Protection IP40

Ambient Temperature -10°C to +40°C

Supply Voltage 230 Vac ±10% / 50 Hz

Power Consumption 12 W (max)

Dimensions 293 x 192 x 88 mm

Weight 2.5 kg

Output Options

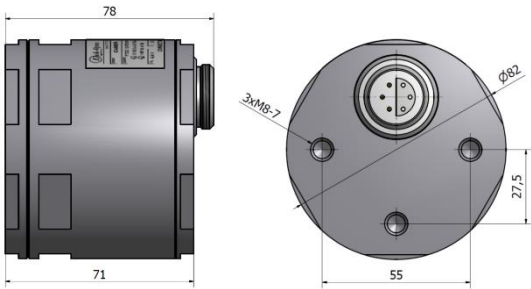
- Video output PAL, female BNC 75 Ω – order: **ESPO-1..-P**
- IP Camera to network LAN, female RJ45 – order: **ESPO-1..-L**
- Local WiFi direct to mobile or tablet – order: **ESPO-1..-R**

Connecting Cable

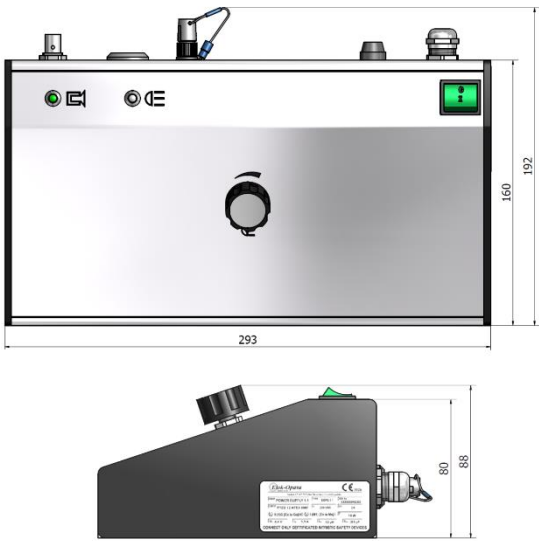
Maximum Length 120 m

Note: Cable length needs to be specified during ordering for option with connectors at both ends – e.g. order: **ESPO-C020** (for 20 m).

Camera



Control Unit



Connection Options

