

# Compact IoT Gateway

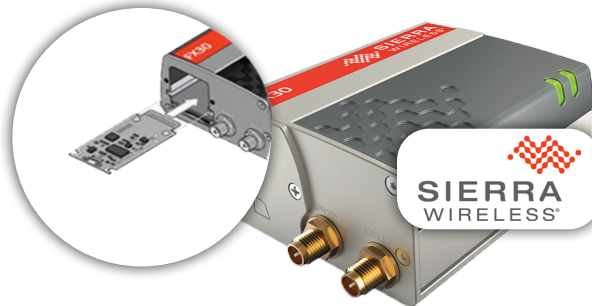
IoT Edge Computing Solution

MASTER  
CHIPS

## Extension Cards



## Modem Router 4G LTE-M, NB-IoT

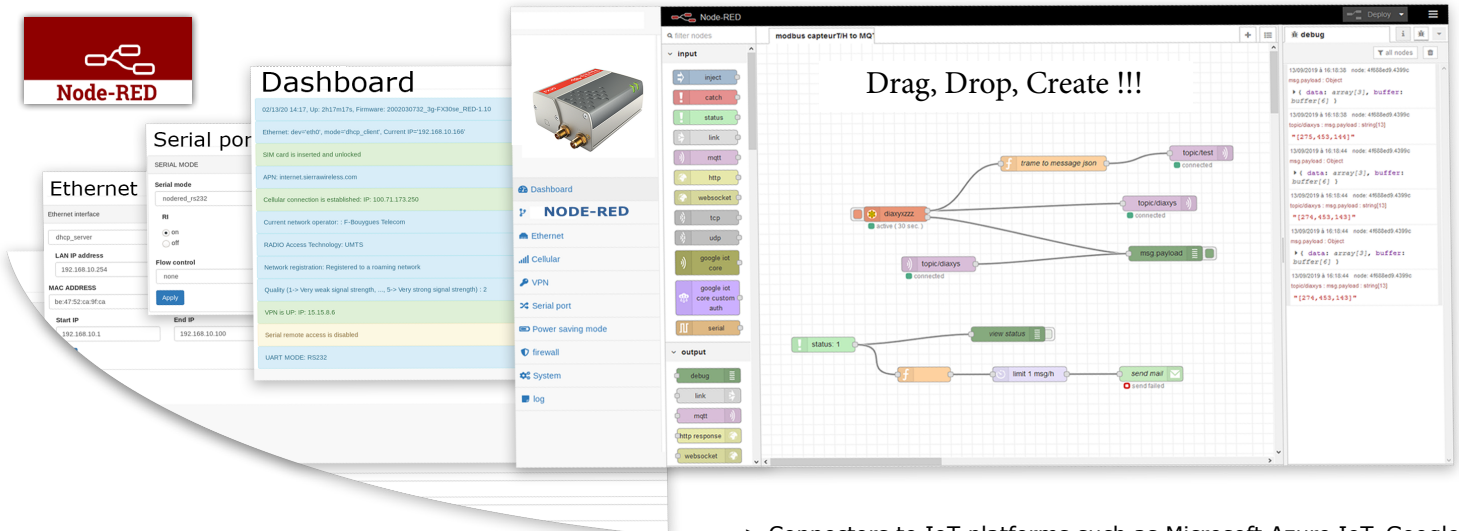


### FX30 NR

The Sierra Wireless Gateway makes it easy to send information and process your data over the cellular network.

Secure and energy-efficient, this solution integrates perfectly into different networks through its extension cards.

## Node-RED Embedded



> Native integration of the main IoT protocols

Modbus TCP/RTU

MQTT

HTTP/FTP/SCP

> Scalability: Add your own protocols and connectors

> Connectors to IoT platforms such as Microsoft Azure IoT, Google Cloud IoT, IoThink Kheiron

> Interoperability: email, SMS, WEBSOCKET

> Programmability: Graphically define your own scenarios (flows) to drive the gateway (edge computing, fota/cota, failover).



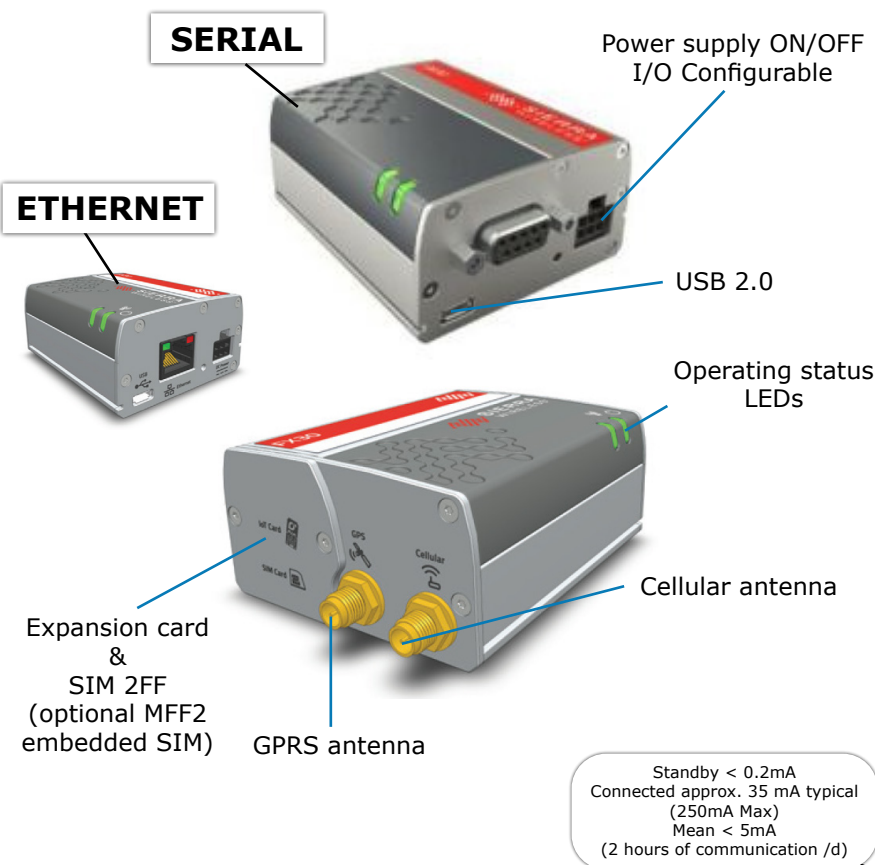
## Cellular Connectivity

### SIM Multi Operator & Embedded SIM

This intelligent SIM card allows connection in more than 160 countries by automatically selecting the best performing network.

With more than 600 ISPs, the SIM card can connect to the Orange, Bouygues telecom, SFR and many other networks depending on the country where the equipment is installed.





## Features

- **Intuitive and secure WEB interface** (compatible with all browsers and Operating Systems)
- Multi-languages (French, English, Italian, Spanish)
- Dynamic dashboard (connection status, network status, etc)
- Setting up the SIM card (APN)
- Serial link parameterization (speed, parity, stop bit, flow control)
- TCP/IP serial port server with modification of the listening TCP port
- **OpenVPN client** with display of device status and IP address
- **Firewall** based on iptables: standard or custom mode that allows you to modify your rules without risk of blocking and in a totally secure way.
- Firmware update locally or remotely
- **Energy saving mode** (check box system per slot of 1h) ideal use on solar panel
- **Customization possible** (your logo, another feature, a different language, etc )

## Ideal for industry!

### Aluminum Case

Operation from -30°C up to +75°C

### Vibration and shock resistant

Military Standard MIL-STD-810-G

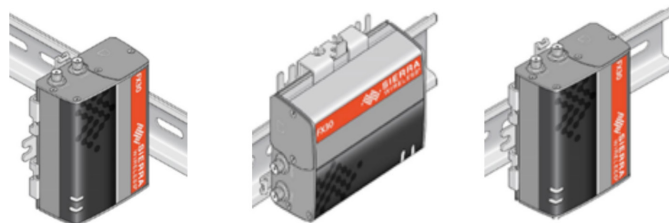
### Moisture resistance up to 95%.

### Certified IEC60950-1

E-MARK, FCC/IC, UL, RCM, CE&RoHS, REACH

### Power supply 4.75-32VDC

## Mounting versatility\*



\*Optional extras

## Description of the range FX30 NR Series

670201	<b>FX30S 3G NR</b>	DC, GENERIC, WORLD, HSPA+ (incl. DC/IO cable, Mounting bracket) Node-Red Embedded
670202	<b>FX30 3G NR</b>	DC, GENERIC, WORLD, HSPA+ (incl. DC/IO cable, Mounting bracket) Node-Red Embedded
670203	<b>FX30 LTE Cat.1 NR</b>	DC, GENERIC, EMEA, LTE Cat.1 (incl. DC/IO cable, Mounting bracket) Node-Red Embedded
670204	<b>FX30 LTE CatM1/NB1 NR</b>	DC, LTE CatM1/NB1 (incl. DC/IO cable, Mounting bracket) Node-Red Embedded
670205	<b>FX30S LTE CatM1/NB1 NR</b>	DC, LTE CatM1/NB1 (incl. DC/IO cable, Mounting bracket) Node-Red Embedded